

NGCP 

CONNECT + CREATE + COLLABORATE

NGCP Celebrates Citizen Science

April 30, 2024



NGCP Vision

The vision of the National Girls Collaborative Project is to **support and create STEM experiences** that are as **diverse as the world we live in.**



Our Goals

Connect + Create + Collaborate

1

Build and sustain a network of advocates to provide equitable and inclusive STEM opportunities.

2

Catalyze equity in STEM from research to practice by providing actionable knowledge that transforms the STEM experience.

3

Increase our collective impact by strengthening organizational effectiveness and enhancing our fiscal sustainability.



NGCP Resources

- **National Webinars**

- Monthly on relevant topics, speakers include educators, researchers, authors, and diverse STEM professionals

- **Monthly Newsletter**

- National events, STEM resources for girls and youth, professional development opportunities for educators, and research and reports

- **NGCP Website**

- Exemplary Practices pages on Engaging Girls in STEM and Access and Equity, blog posts, and statistics and research related to girls and women in STEM



NGCP Podcast: Inspiring Curiosity from Early Childhood to Break Gender Stereotypes

In our first episode, we explore the crucial role of early childhood experiences in shaping girls' interest and engagement in STEM



5 Ways to Be an Ally to Girls and Women in STEM

If you think of gender equity in STEM as a “women’s issue” we encourage you to think again!



NGCP 

CONNECT + CREATE + COLLABORATE



NGCP Celebrates Citizen Science

April 30, 2024

Speakers



Tara Cox
NGCP



Lise Mitchell
Grand Ledge Area District Library



Suzi Taylor
Montana State University

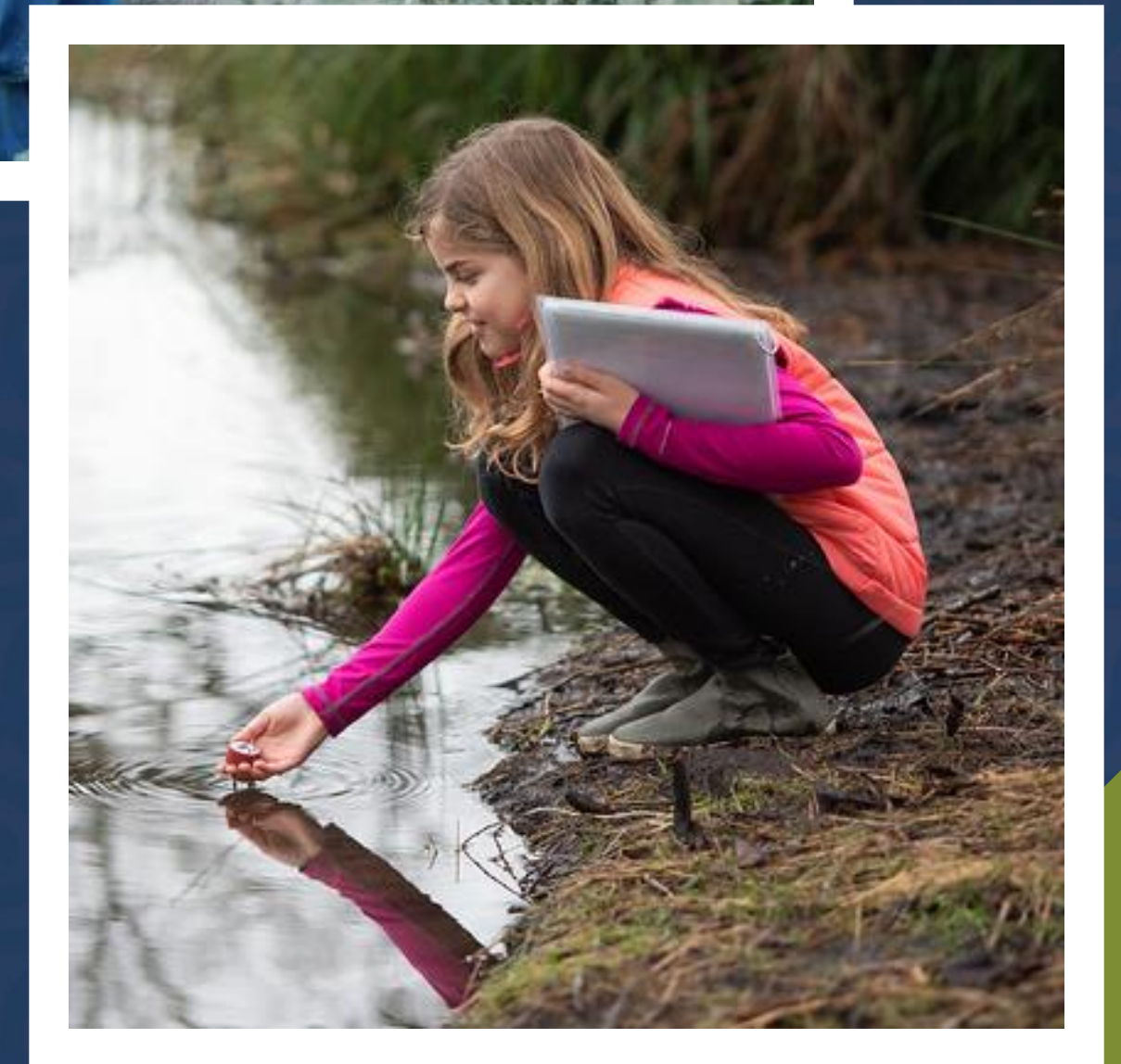
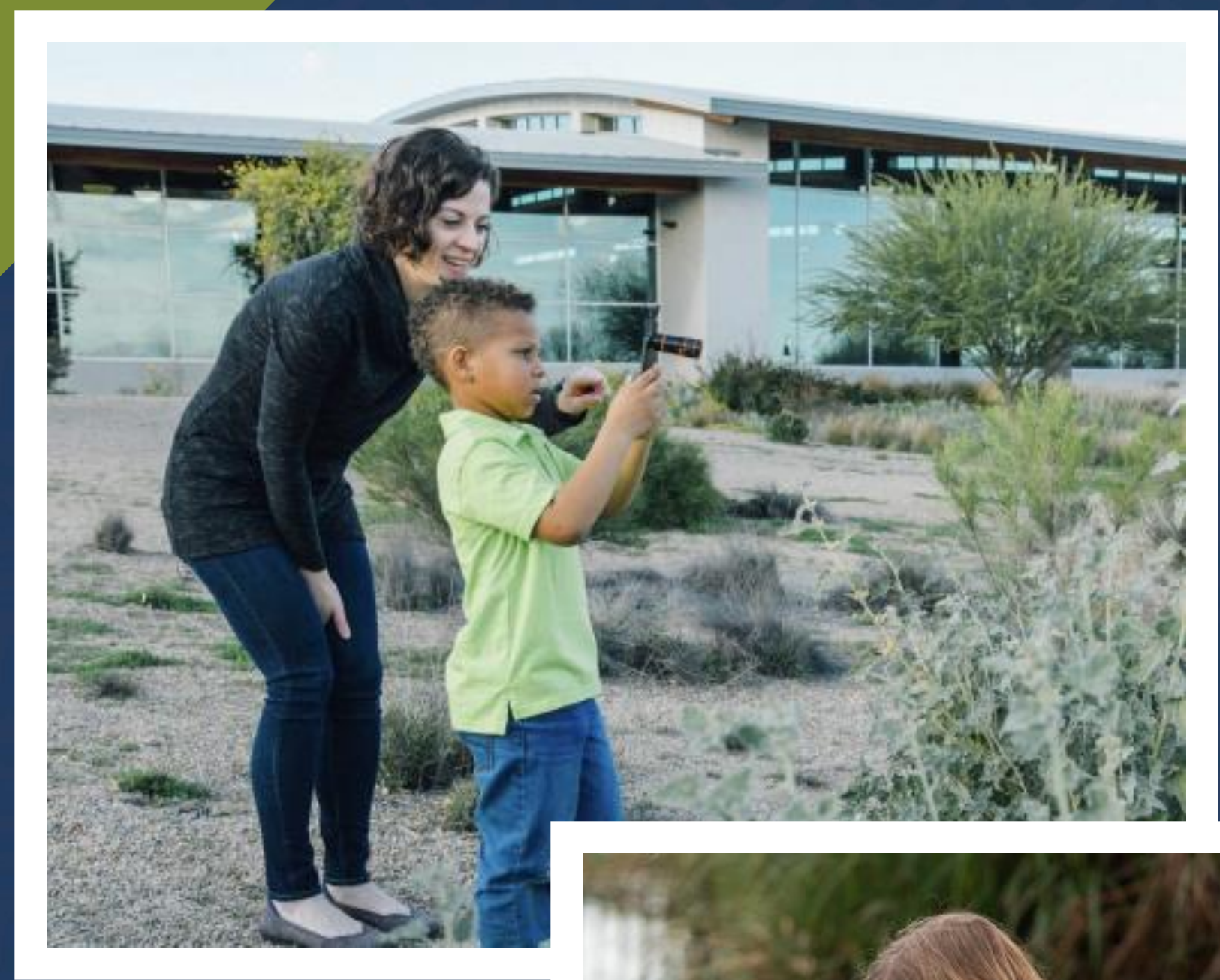


What is citizen science?

It is also referred to as community science, participatory research, and open science.

It is a global movement that enables people of all ages with diverse experiences to **collaborate** with scientists by participating in real **scientific research**.

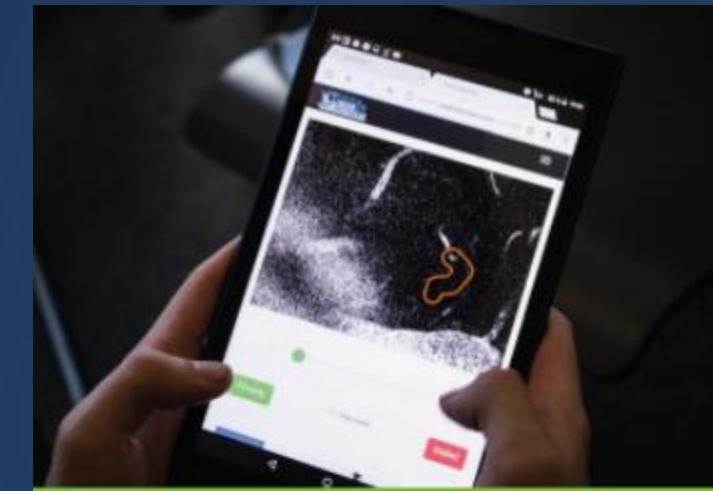
It's how people can **make an impact** on issues they care about!



Citizen science projects range from astronomy and ecology to biology and environmental science.

Participants might...

- Help track bird migrations
- Monitor water and air quality
- Identify celestial objects
- Take images of nature
- Classify images from space telescopes
- Count pollinators
- Contribute biological samples



STALL CATCHERS

Accelerate Alzheimer's research by playing an online game.



ETERNA

Design and study complex RNA molecules to help scientists develop RNA-based medicines to combat global diseases.



NEUREKA

Play games and answer questions to improve mental health and dementia research.



GLOBE AT NIGHT

Help gather light pollution data.



FLU NEAR YOU

Spread the word. Not the flu.



ISEECHANGE

Document change in weather and climate in your community.



Which of these activities count as citizen science?

A. Take a photo of a plant and upload it to the iNaturalist app.



B. Identify mosquito habitats and log data on the Globe Observer App.



C. Plant a pollinator garden to increase pollinator activity.



D. Test your local tap water and report findings to Crowd the Tap



Citizen Science & STEM Equity

- Accessible, low barrier to entry
- Inclusive of diverse perspectives
- Empowers people to have agency over scientific knowledge
- Enables people to address local challenges



Strengthening STEM Opportunities for Girls

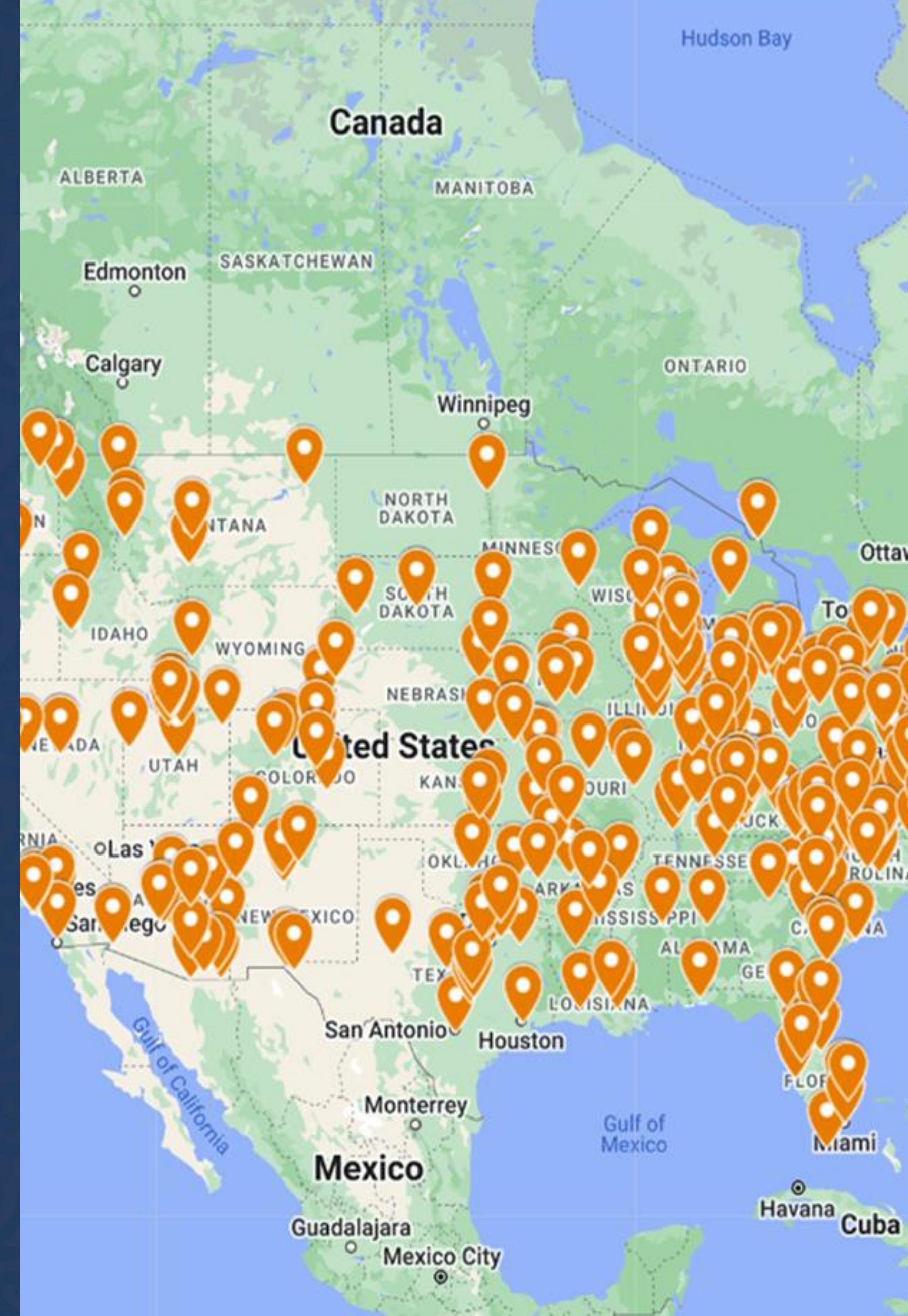
Agency & Choice
Experiential & Hands-on
Collaborative learning
Real-world relevance
Exposure to role models



Citizen and Community Science Library Network

- In partnership with SciStarter and Arizona State University, NGCP supports, scales, and sustains the **libraries as community hubs for citizen science** program.
- The network has grown to almost 1000 libraries, supporting their users in gaining awareness and access to resources through training, events, and kits.

SciStarter.org/library-network



Resources for Libraries and other CBOS



SciStarter.org/library-resources

ONE MILLION
ACTS OF SCIENCE
— **CITIZEN SCIENCE MONTH** —
APRIL

CitizenScienceMonth.org



National Girls
Collaborative Project

NGCP Celebrates Citizen Science

Citizen Science and Libraries

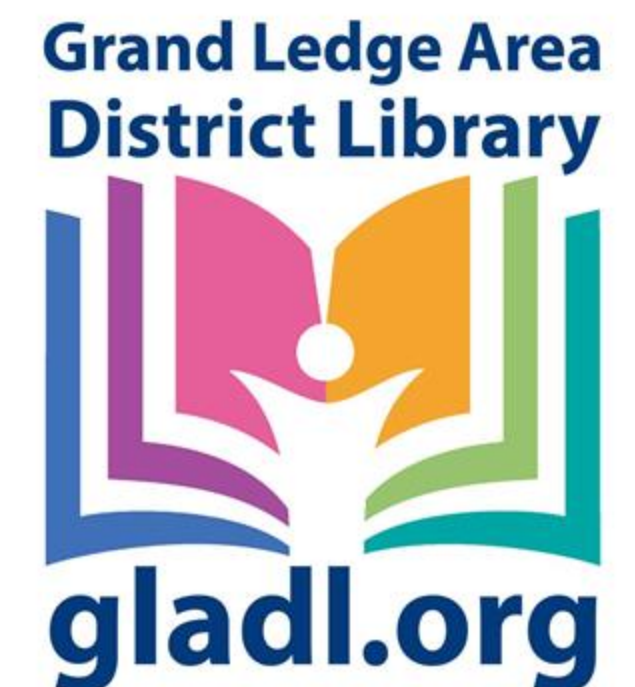
— Lise Mitchell, Grand Ledge Area District Library, Michigan —



National Girls
Collaborative
Project

The SciStarter logo consists of the word "scistarter" in a bold, lowercase, sans-serif font. The "s" is orange, "ci" is green, "st" is yellow, and "arter" is white. Below it, the tagline "Science we can do together." is written in a smaller, white, sans-serif font. The entire logo is set against a dark blue rectangular background.

scistarter
Science we can do together.



Why Science? Why Libraries?

Public Libraries everywhere have a mission to **connect** with our community.

We use programming to **attract** community members to the library, **engage** in them something meaningful, and **retain** them as patrons.

Science and specifically Citizen Science gives our community the opportunity to **learn and contribute** in a real way – and it attracts **all ages and a broad spectrum of interests**.

Libraries provide a **safe, neutral zone** where **curiosity is encouraged**.

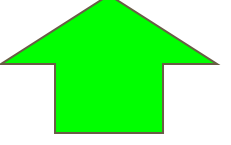
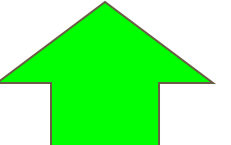
Science is Strategic

- Citizen Science and [GLADL's Strategic Plan](#)
 - **Vision Statement [destination]** – Our vision is to provide vibrant resources and inclusive spaces for people to thrive through innovation, education, and entertainment.
- Goals
 - #1 Spark Imagination, Joy and Enrichment
 - #2 Promote Learning and Literacy
 - #3 Serve as a Community Connector

Review what you are doing – how science adds value

- **Take Home Crafts** and **In-person Crafts** – adding science twists and highlighting collections - giving crafts a science boost!
- **New Events** – lots of resources to try something new
- **Library of Things** - from science kits to games to practical items that help patrons learn new skills & explore interests
- **Strengthening community partnerships** - both organizations and businesses

Impact on the Library

- Increased Circulation - 21% 
 - Increase in Library of Things checkouts
- Patrons – new and updated - 5% 
 - Increase in new patrons created online
- Increased awareness
 - [Citizen Science Month webpage](#) – highlights events & partnerships
 - Telling your story and getting the word out

Local Science Partners



EATON
CONSERVATION
DISTRICT



Walmart 

Spark Good
for Grants



Scouts



girl scouts 
heart of michigan

Questions? Feel free to contact me!

Lise Mitchell, Library Director

Grand Ledge Area District Library

131 E. Jefferson

Grand Ledge, MI 48837

517-622-3550

director@gladl.org